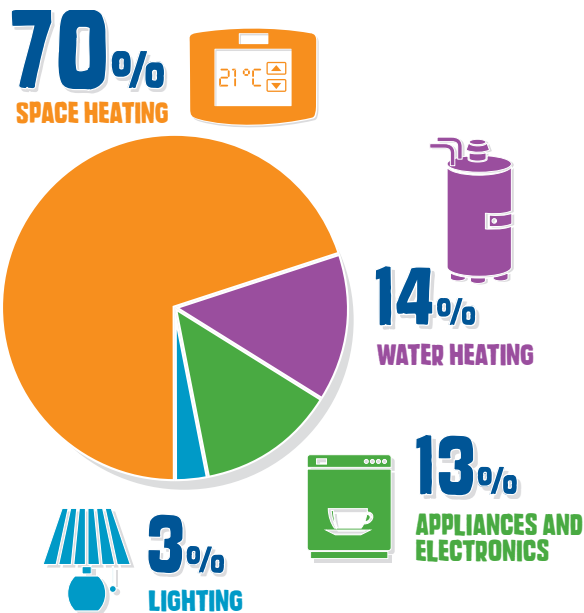
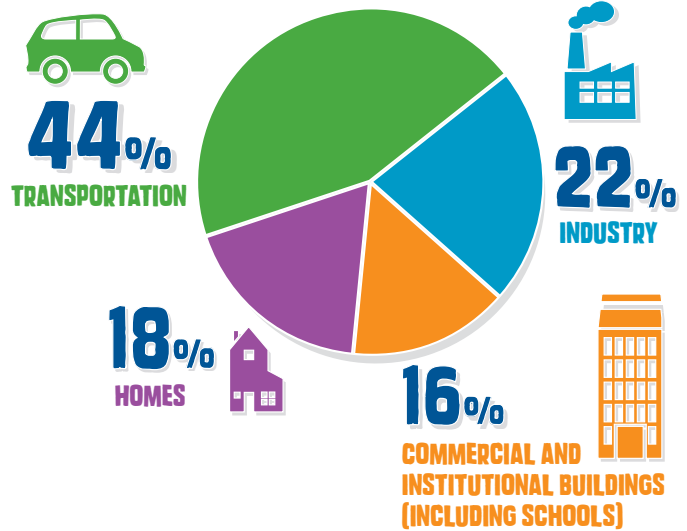


HOW DO WE USE ENERGY?

ENERGY USE IN NEWFOUNDLAND AND LABRADOR

Trucks, cars, ferries and other vehicles use 44% of the energy consumed in our province. Industries, like oil refining, use a lot of energy too, as well as homes and buildings.



ENERGY USE AT HOME

You know how cold winters can get in Newfoundland and Labrador, so it's no surprise that heating our homes is the single largest source of energy use—a whopping 70%.

ENERGY USE IN SCHOOLS

Keeping students and staff warm in the winter and cool in the summer accounts for 48% of the energy used in our schools. Powering this heating and cooling equipment, along with all the other electronics and appliances found in schools, uses another 31%.

